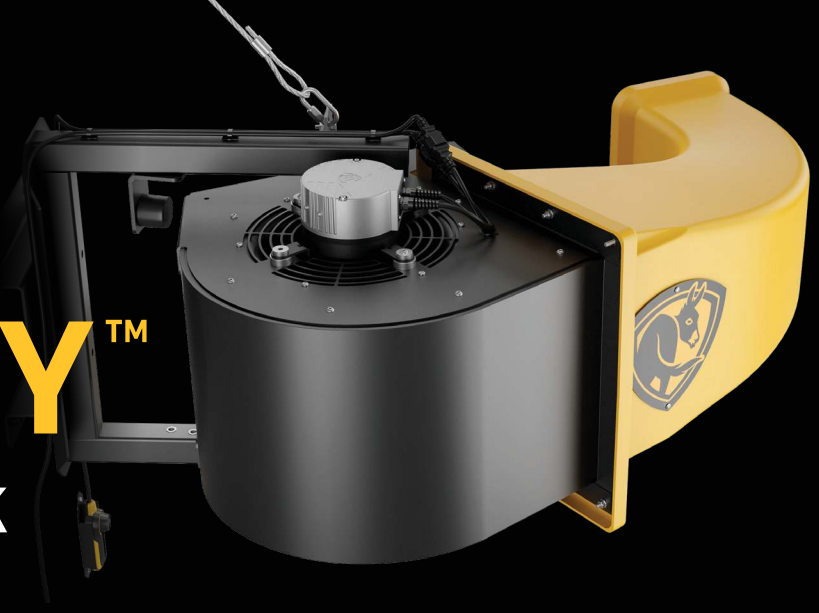




**BIG ASS FANS**

# VELOCITY™

**DOMINATE THE DOCK**

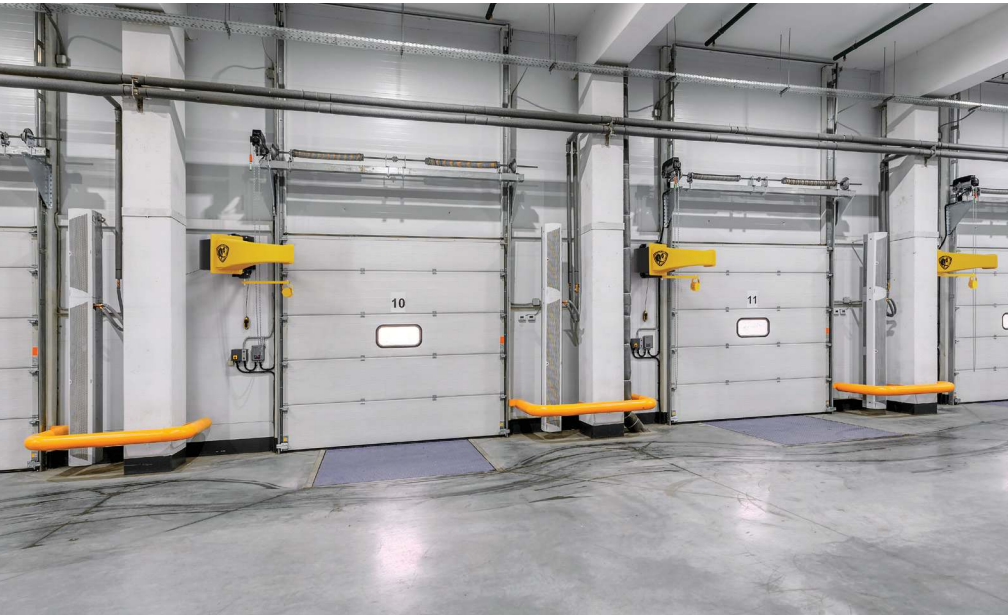


## WHEN THE HEAT IS ON, VELOCITY DELIVERS.

With over 2,000 CFM of high-velocity airflow, Velocity flushes the air inside a standard semi-truck trailer every two minutes—completely refreshing a 53-foot trailer up to 30 times per hour. Hot, suffocating conditions don't stand a chance as fresh, cooler air takes over, allowing your team to work harder, smarter, and longer without the burnout. Be the dock boss who brings relief with Velocity.

## BENEFITS

- Cooling effect reaches 30% farther than other dock fans
- Quiet operation
- Low profile design optimized for environments with forklifts, conveyors and foot traffic
- Up to 5-year warranty



## KEY FEATURES

- Wall-mounted gas spring pivot system
- Mount extension available
- 110–120V or 208–240V
- Integrated light option
- OSHA-compliant fan guards
- Industrial-strength safety features



## FOR MORE INFORMATION

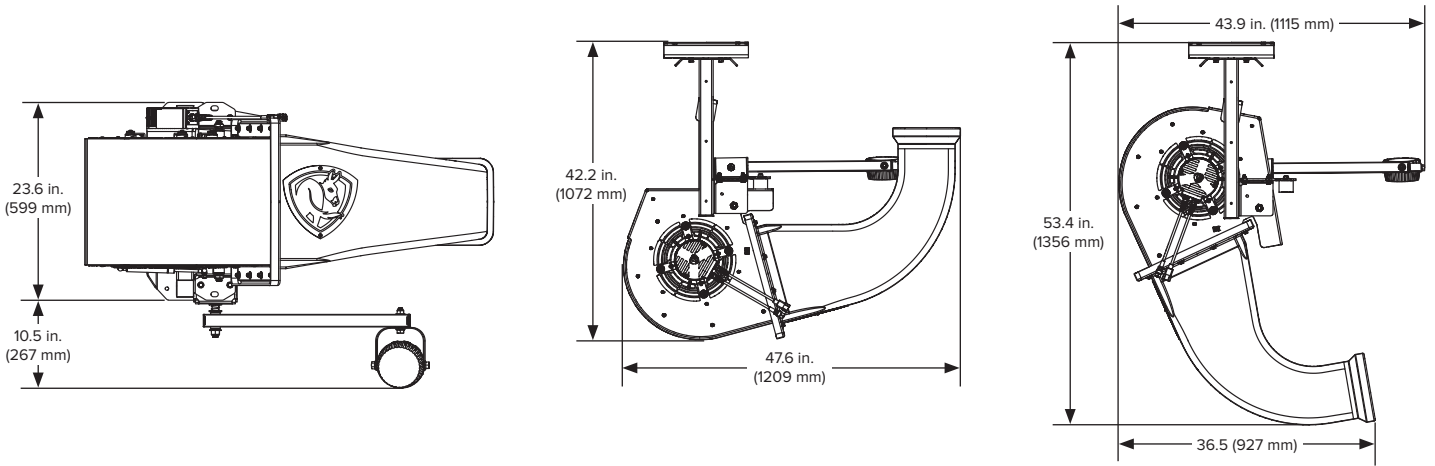
Visit [bigassfans.com/velocity](https://bigassfans.com/velocity) or call **877.BIG.FANS** to learn how Velocity can transform your loading dock.



**BIG ASS FANS**

# VELOCITY™

## TECHNICAL SPECIFICATIONS



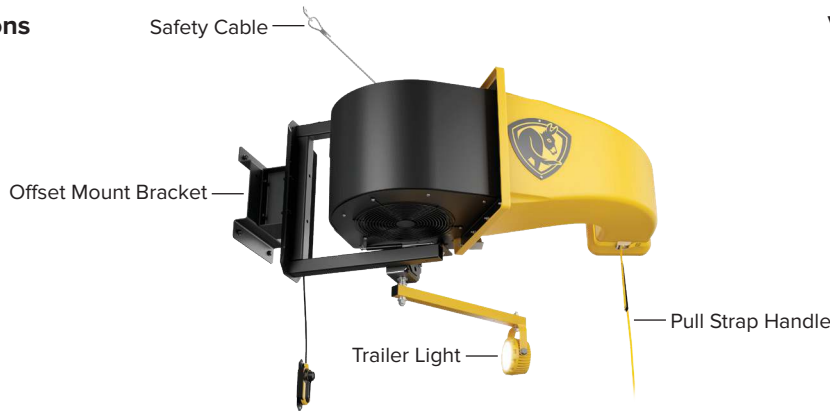
### Technical Specifications

Input Power and Required Breaker	Motor Size	Max Amps	Max Power	Max Speed	Max Airflow	Weight <sup>1</sup>	Packaged Dimensions and Weight	Max Operating Temperature	Sound at Max Speed <sup>2</sup>
110–120 VAC, 1 Φ, 50/60 Hz, 20 A 208–240 VAC, 1 Φ, 50/60 Hz, 20 A	2/3 hp (0.5 kW)	9.6 A 5.7 A	639 W 622 W	956 RPM	2,125 CFM 2,098 CFM	135 lb (61.2 kg)	48 in. L x 40 in. W x 28 in. H (1219 mm L x 1016 mm W x 711 mm H) 172.2 lb (78.1 kg)	104°F (40°C)	64.9 dBA

### Construction Features

Fan Assembly	Mounting	Power Supply	Control	Environment	Colors	Accessories	Optional Trailer Light
Structural steel construction OSHA-compliant fan guards	Reversible mounting frame for installation to left or right of dock door Multiple mounting holes for precise vertical and horizontal fan placement Ergonomic gas spring system enables easy pivoting and keeps fan securely positioned	18 ft (5.5 m) cord	Infinitely variable speed control	IP55 Suitable for damp environments	Black fan assembly and mounting components with high-visibility yellow nozzle	Trailer light Safety cable Offset mount bracket Pull strap handle	20 W 1,800 Lumens 5,000K

### Accessory Options



### Variable Speed Control



<sup>1</sup> Weight includes fan assembly, nozzle, and all mounting components.

<sup>2</sup> Fans are sound tested at maximum speed in a laboratory environment. Actual results in field conditions may vary due to sound reflecting surfaces and environmental conditions.

Lead times may vary.  
See full warranty for coverage information.



**BIG ASS FANS**

USA  
BIGASSFANS.COM  
877.244.3267

CANADA  
BIGASSFANS.COM  
844.924.4277

AUSTRALIA  
BIGASSFANS.COM/AU  
1300.244.277

SINGAPORE  
BIGASSFANS.COM/SG  
65.6709.8500